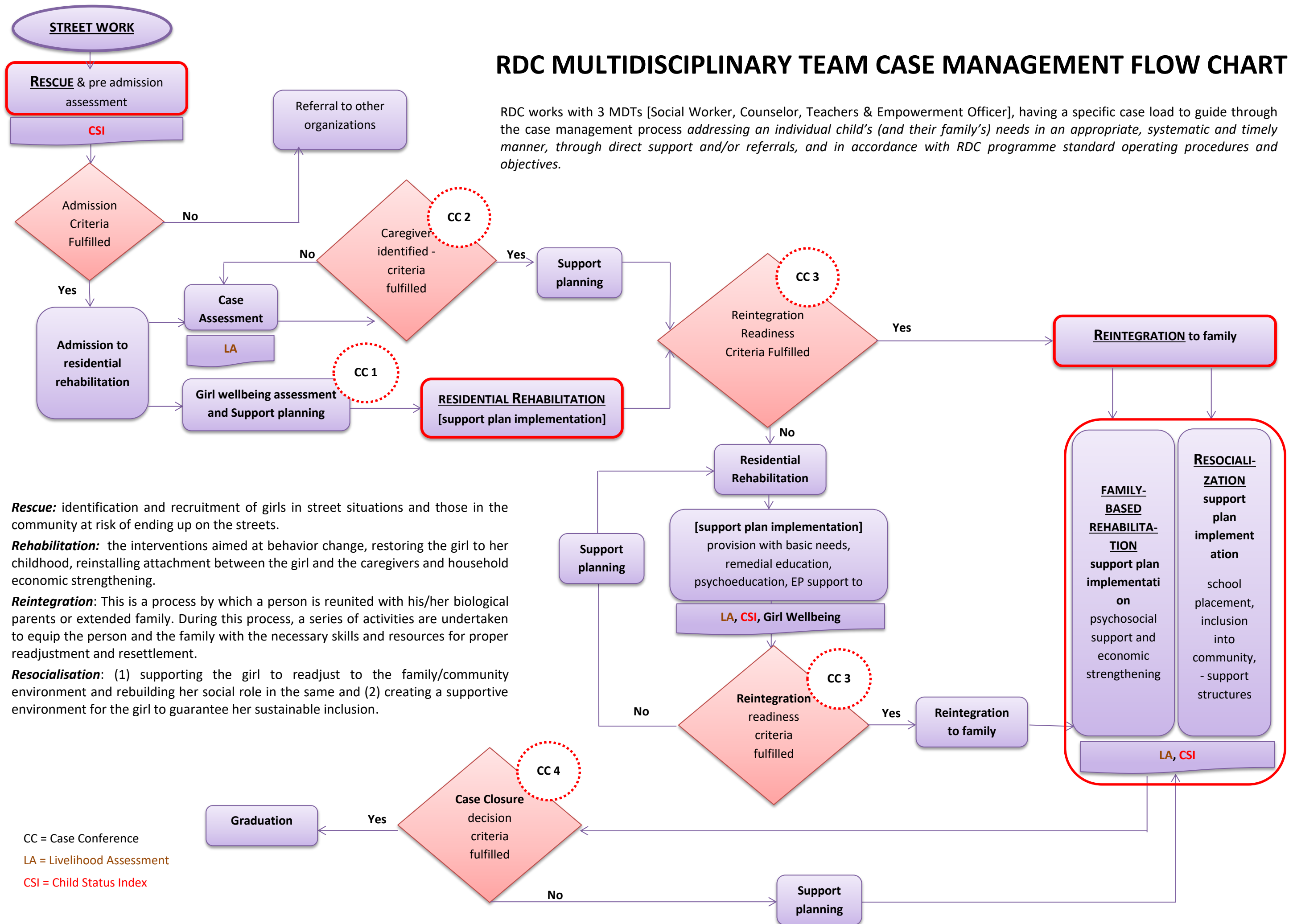


RDC MULTIDISCIPLINARY TEAM CASE MANAGEMENT FLOW CHART

RDC works with 3 MDTs [Social Worker, Counselor, Teachers & Empowerment Officer], having a specific case load to guide through the case management process *addressing an individual child's (and their family's) needs in an appropriate, systematic and timely manner, through direct support and/or referrals, and in accordance with RDC programme standard operating procedures and objectives.*



Rescue: identification and recruitment of girls in street situations and those in the community at risk of ending up on the streets.

Rehabilitation: the interventions aimed at behavior change, restoring the girl to her childhood, reinstalling attachment between the girl and the caregivers and household economic strengthening.

Reintegration: This is a process by which a person is reunited with his/her biological parents or extended family. During this process, a series of activities are undertaken to equip the person and the family with the necessary skills and resources for proper readjustment and resettlement.

Resocialisation: (1) supporting the girl to readjust to the family/community environment and rebuilding her social role in the same and (2) creating a supportive environment for the girl to guarantee her sustainable inclusion.

CC = Case Conference

LA = Livelihood Assessment

CSI = Child Status Index